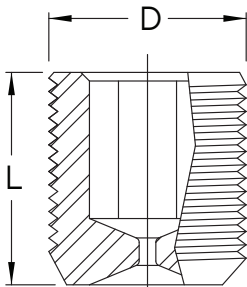


## EIS Threaded Restrictors

Calibrated Orifices  
Standard Thread Sizes

Stainless Steel or Brass NPT  
Flow Testing Available



ENGLISH THREAD SIZES					
Part Number	Thread Sizes	Orifice sizes (in) +/- .001	Nominal D (in)	Nominal L (in)	Hex Key Size (in)
EIS-TE-164-XXX	8-32	.012 thru .035	.164	3/16	5/64
EIS-TE-190-XXX	10-32	.012 thru .050	.190	3/16	3/32
EIS-TE-250-XXX	1/4-28	.012 thru .085	.250	1/4	1/8
EIS-TE-312-XXX	5/16-24	.012 thru .115	.312	5/16	5/32
EIS-TE-375-XXX	3/8-24	.012 thru .145	.375	3/8	3/16
EIS-TE-437-XXX	7/16-20	.012 thru .175	.437	3/8	7/32
EIS-TE-500-XXX	1/2-20	.012 thru .210	.500	1/2	1/4

Example: EIS-TE-164-015 describes a stainless steel EIS 8-32 threaded restrictor with a .015” orifice

METRIC THREAD SIZES					
Part Number	Thread Sizes	Orifice sizes (in) +/- .001	Nominal D (mm)	Nominal L (mm)	Hex Key Size (mm)
EIS-TM-04-XXX	4 X .7	.012 thru .035	4	4	2
EIS-TM-05-XXX	5 X .8	.012 thru .055	5	5	2.5
EIS-TM-06-XXX	6 X 1	.012 thru .075	6	6	3
EIS-TM-08-XXX	8 X 1.25	.012 thru .115	8	8	4
EIS-TM-10-XXX	10 X 1.5	.012 thru .155	10	10	5
EIS-TM-12-XXX	12 X 1.75	.012 thru .195	12	12	6

Example: EIS-TM-04-015 describes a stainless steel EIS 4 X .7 threaded restrictor with a .015” orifice

STAINLESS STEEL NPT PIPE THREAD SIZES					
Part Number	Thread Sizes	Orifice sizes (in) +/- .001	Nominal D (in)	Nominal L (in)	Hex Key Size (in)
EIS-TPS-062-XXX	1/16-27 NPT	.012 thru .115	.312	.315/.305	5/32
EIS-TPS-125-XXX	1/8-27 NPT	.012 thru .145	.405	.315/.305	3/16
EIS-TPS-250-XXX	1/4-18 NPT	.012 thru .210	.540	.406/.391	1/4
EIS-TPS-375-XXX	3/8-18 NPT	.012 thru .270	.675	.406/.3915/16	Example:

EIS-TPS-062-015 describes a stainless steel EIS 1/16-27 threaded restrictor with a .015” orifice

BRASS NTP PIPE THREAD SIZES					
Part Number	Thread Sizes	Orifice sizes (in) +/- .001	Nominal D (in)	Nominal L (in)	Hex Key Size (in)
EIS-TPB-062-XXX	1/16-27 NPT	.012 thru .115	.312	.315/.305	5/32
EIS-TPB-125-XXX	1/8-27 NPT	.012 thru .145	.405	.315/.305	3/16
EIS-TPB-250-XXX	1/4-18 NPT	.012 thru .210	.540	.406/.391	1/4
EIS-TPB-375-XXX	3/8-18 NPT	.012 thru .270	.675	.406/.391	5/16

Example: EIS-TPB-062-015 describes a brass EIS 1/16-27 threaded restrictor with a .015” orifice

### Engineered Inserts & Systems, Inc.

QMS is certified to IATF 16949

RoHS Compliant

Phone: 203-301-3334

Fax: 203-301-3335

Web: [eisinserts.com](http://eisinserts.com)