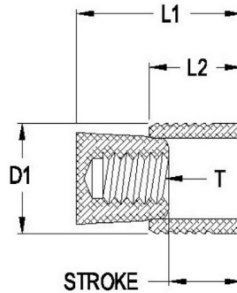


LRST MODEL



PLUG: Case Hardening Steel PIN: Heat Treated Steel		PLUG: 300 Series SS PIN: 300 Series SS		PLUG: 6061 Alum PIN: 7075 Alum
EIS	KVT / SFC	EIS	KVT/ SFC	EIS
EIS-LRST-040	LK 950-040	EIS-3LRST3-040	LK 600-040	EIS-5LRST5-040
EIS-LRST-050	LK 950-050	EIS-3LRST3-050	LK 600-050	EIS-5LRST5-050
EIS-LRST-060	LK 950-060	EIS-3LRST3-060	LK 600-060	EIS-5LRST5-060
EIS-LRST-070	LK 950-070	EIS-3LRST3-070	LK 600-070	EIS-5LRST5-070
EIS-LRST-080	LK 950-080	EIS-3LRST3-080	LK 600-080	EIS-5LRST5-080
EIS-LRST-090	LK 950-090	EIS-3LRST3-090	LK 600-090	EIS-5LRST5-090
EIS-LRST-100	LK 950-100	EIS-3LRST3-100	LK 600-100	EIS-5LRST5-100
EIS-LRST-120	LK 950-120	EIS-3LRST3-120		EIS-5LRST5-120
EIS-LRST-140	LK 950-140	EIS-3LRST3-140		EIS-5LRST5-140
EIS-LRST-160	LK 950-160	EIS-3LRST3-160		EIS-5LRST5-160
EIS-LRST-180	LK 950-180	EIS-3LRST3-180		EIS-5LRST5-180
EIS-LRST-200		EIS-3LRST3-200		EIS-5LRST5-200
EIS-LRST-220		EIS-3LRST3-220		EIS-5LRST5-220

Engineered Inserts & Systems, Inc.

QMS is certified to IATF 16949

RoHS Compliant

Phone: 203-301-3334

Fax: 203-301-3335

Web: eisinserts.com