

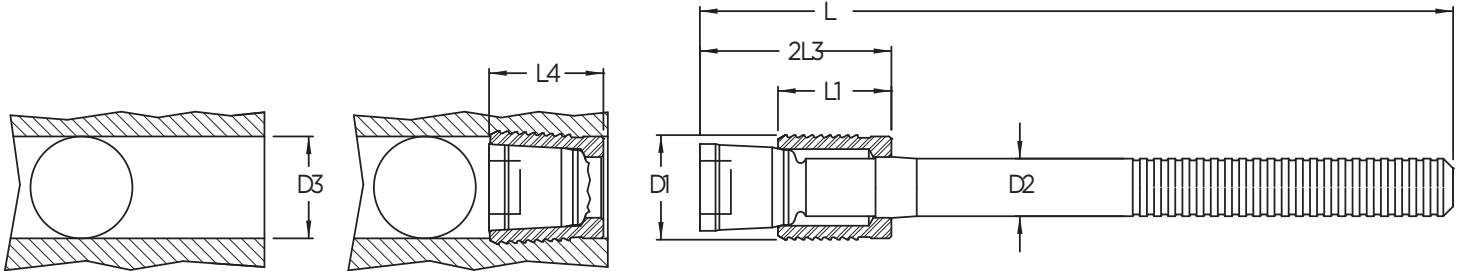


EIS
ENGINEERED
INSERTS & SYSTEMS, INC.

EIS-RS Metric Series Sealing Plug

Sleeve: Case Hardening Steel, Black Oxide Finish

Mandrel: Heat Treatable Steel, Black Oxide Finish



STANDARD LENGTH

(Dimensions in mm unless otherwise specified)							
D1	L1	D2	L2 REF	L3 max.	L4 max.	D3 +0,12 -0.0	EIS P/N
4.0	4.5	2.50	39	9.0	6.5	4.0	EIS-RS-040
5.0	5.5	3.00	41	10.0	7.5	5.0	EIS-RS-050
6.0	6.5	3.40	43	12.0	8.0	6.0	EIS-RS-060
7.0	7.5	4.10	38	14.0	9.0	7.0	EIS-RS-070
8.0	8.5	4.20	40	15.0	10.5	8.0	EIS-RS-080
9.0	9.5	4.50	43	17.0	11.0	9.0	EIS-RS-090
10.0	10.5	4.75	45	19.0	12.5	10.0	EIS-RS-100

LONG LENGTH

(Dimensions in mm unless otherwise specified)							
D1	L1	D2	L2 REF	L3 max.	L4 max.	D3 +0,12 -0.0	EIS P/N
4.0	4.5	2.50	39	9.0	6.5	4.0	EIS-RSL-040
5.0	5.5	3.00	41	10.0	7.5	5.0	EIS-RSL-050
6.0	6.5	3.40	43	12.0	8.0	6.0	EIS-RSL-060
7.0	7.5	4.10	38	14.0	9.0	7.0	EIS-RSL-070
8.0	8.5	4.20	40	15.0	10.5	8.0	EIS-RSL-080
9.0	9.5	4.50	43	17.0	11.0	9.0	EIS-RSL-090
10.0	10.5	4.75	45	19.0	12.5	10.0	EIS-RSL-100

Engineered Inserts & Systems, Inc.

QMS is certified to IATF 16949

RoHS Compliant

Phone: 203-301-3334

Fax: 203-301-3335

Web: eisinserts.com